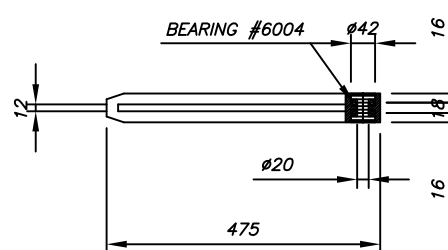
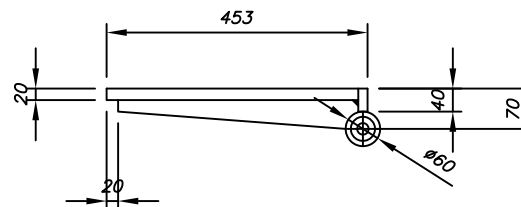
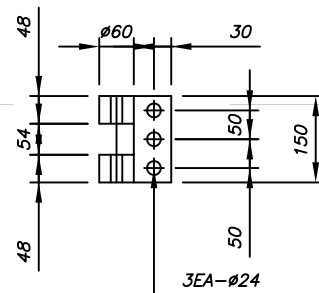
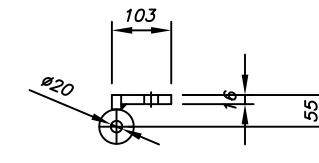


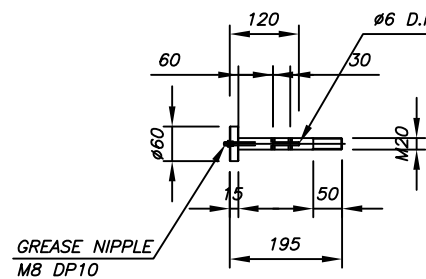
Ⓐ HINGE BODY "A"



Ⓑ HINGE BODY "B"

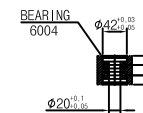


Ⓒ HINGE SHAFT



**NOTE**

- HINGE STRUCTURE SHALL BE A STRUCTURE THAT ALLOWS DOOR ALIGNMENT BY DOOR DEFLECTION.
- BEARING DETAILS SHALL BE AS FOLLOWS.



REV.01	30/07/22	ISSUED THE DRAWING	S.L KIM	S.H KIM	J.S MOO
--------	----------	--------------------	---------	---------	---------

**SAMHOON CO., LTD.**  
 2651 Sangyeon-Dong, Ssang-Do,  
 Bucheon City, Gyeonggi Province, South Korea  
 TEL: 02-32-061-3501 (HEAD)/ FAX: (02) 361-3500  
 http://www.samhoon.com E-mail:samhoon@samhoon.com

TITLE 군산 배터리 실험실 방폭문  
 PANIC DEVICE SYSTEM

DWG. NO. PMS:

구조검토	구조검토 (Rev.01)	확 인

SAMHOON-GBTP-BD004 **SAMHOON**