

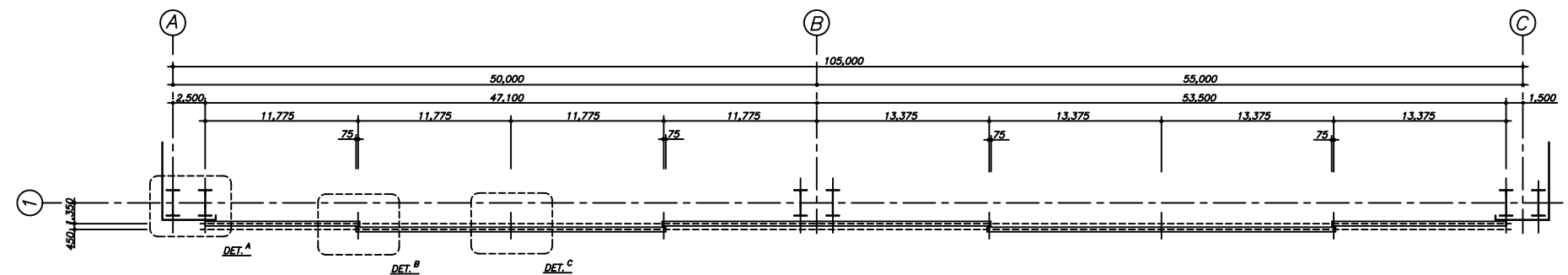
REVIEW LEVEL III

THIS DOCUMENT CONTAINS
SEISMIC CATEGORY (Q) ITEMS
 YES NO

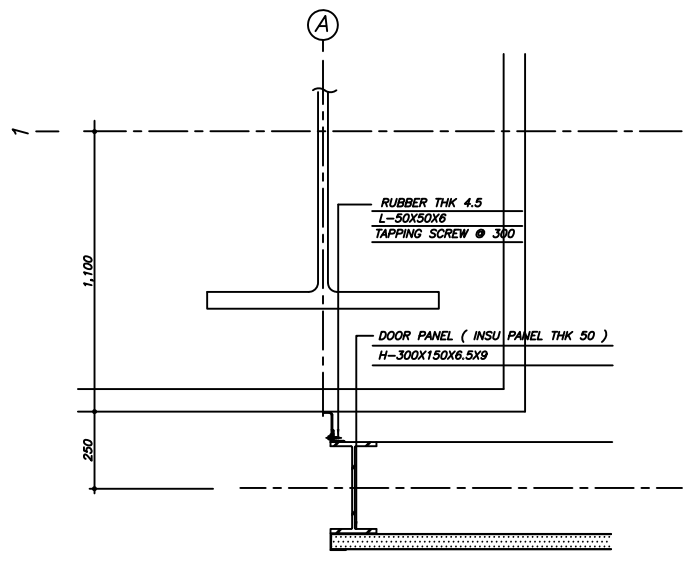
TAIPOWER DRAWING REFERENCE NUMBER

THIS DOCUMENT CONTAINS
SAFETY RELATED ITEMS
 YES NO

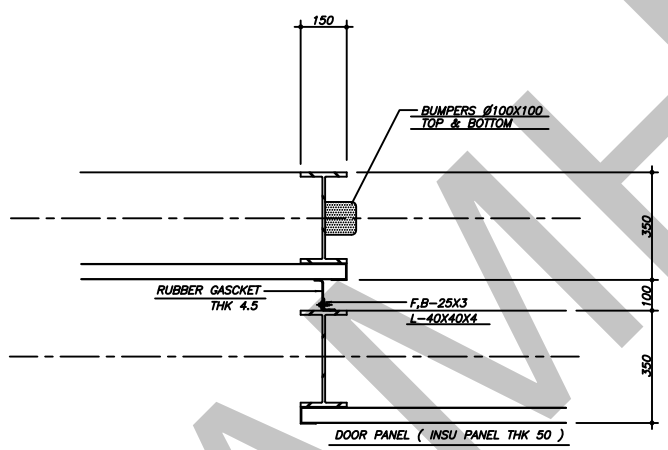
NOTES



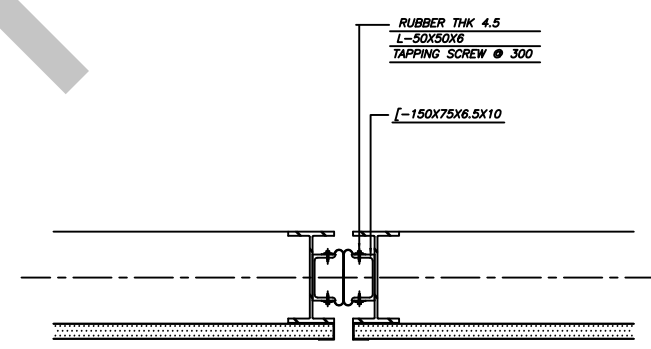
SS-SD-107 TYPE
"1" LINE PLAN
SCALE : 1/200



SS-SD-107 TYPE
"A" PART DETAIL (JAMB 1)
S=1/10

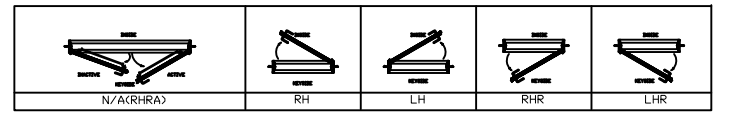


SS-SD-107 TYPE
"B" PART DETAIL (JAMB 2)
S=1/10



SS-SD-107 TYPE
"C" PART DETAIL (JAMB 3)
S=1/10

OPENING TYPE



SAMHOON ENGINEERING CO.,LTD.

SAMHOON

SAMHOON CO., LTD.
#256 Kyungin-Ro,
Bucheon City, Gyeonggi Province, Korea
TEL:(82)-32-661-3501/FAX:(82)-32-661-3505
http://www.samhoon.com E-Mail:samhoon@samhoon.com

REV	DATE	DESCRIPTION	BY	CHKD	APPRD	REFERENCE DRAWINGS	CAD FILE REF.	SHEET NO.	SCALE
△	15.JAN.24	ISSUED FOR DRAWING	S.H.KIM	J.S.KIM	J.S.MOO	CONTENT OF NOTES	Z-PROJECT	SAMHOON- 001	1/200

TITLE : Z - Project
Plan of Front Doors & Detail

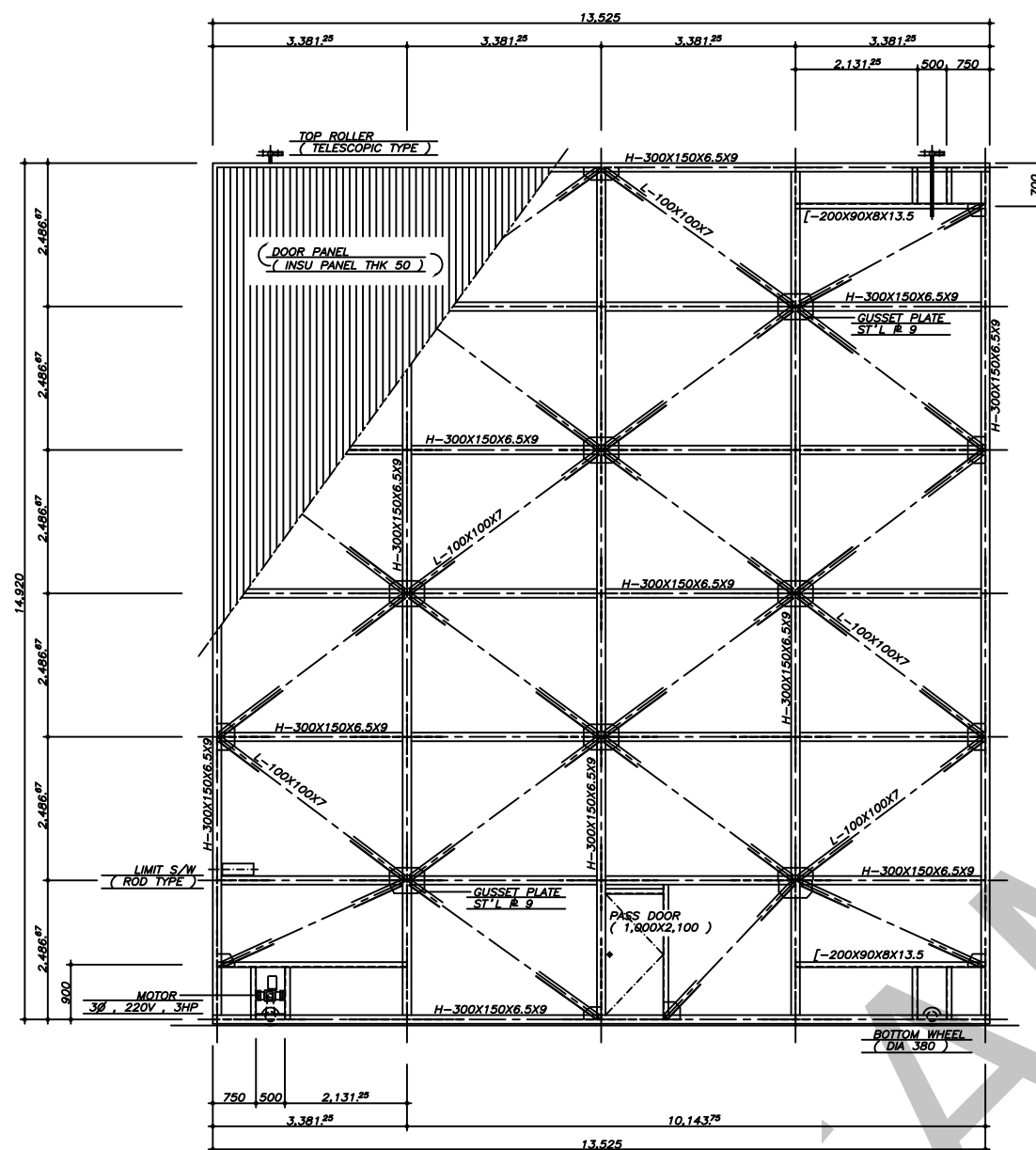
REVIEW LEVEL III

THIS DOCUMENT CONTAINS
SEISMIC CATEGORY (I) ITEMS
 YES NO

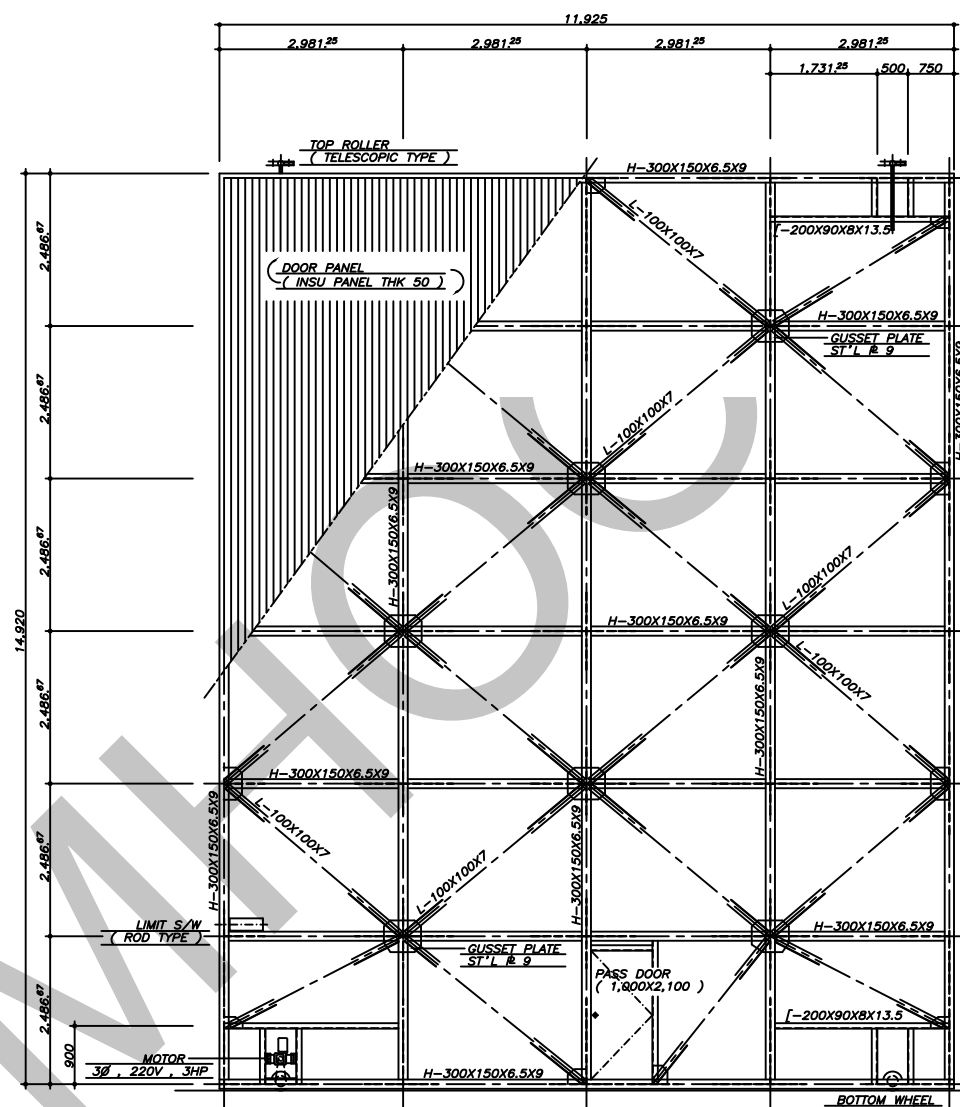
TAIPOWER DRAWING REFERENCE NUMBER

THIS DOCUMENT CONTAINS
SAFETY RELATED ITEMS
 YES NO

NOTES

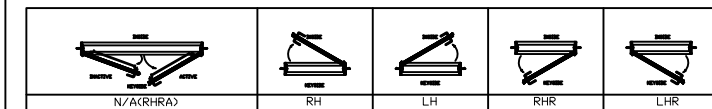


SS-SD-107 TYPE
DOOR PANEL STRUCTURE
SCALE : 1 / 50



SS-SD-107 TYPE
DOOR PANEL STRUCTURE
SCALE : 1 / 50

OPENING TYPE



SAMHOON ENGINEERING CO.,LTD.

SAMHOON

SAMHOON CO., LTD.
#256 Kyungin-Ro,
Bucheon City, Gyeonggi Province, Korea
TEL:(82)-32-661-3501/FAX:(82)-32-661-3505
http://www.samhoon.com E-Mail:samhoon@samhoon.com

REV	DATE	DESCRIPTION	BY	CHKD	APPRD	REFERENCE DRAWINGS	CAD FILE REF.	SHEET NO.	SCALE
							Z-PROJECT	SAMHOON-002	1/50
△	15.JAN.24	ISSUED FOR DRAWING	S.H.KIM	J.S.KIM	J.S.MOO	CONTENT OF NOTES			

TITLE : Z - Project
DOOR PANEL STRUCTURE

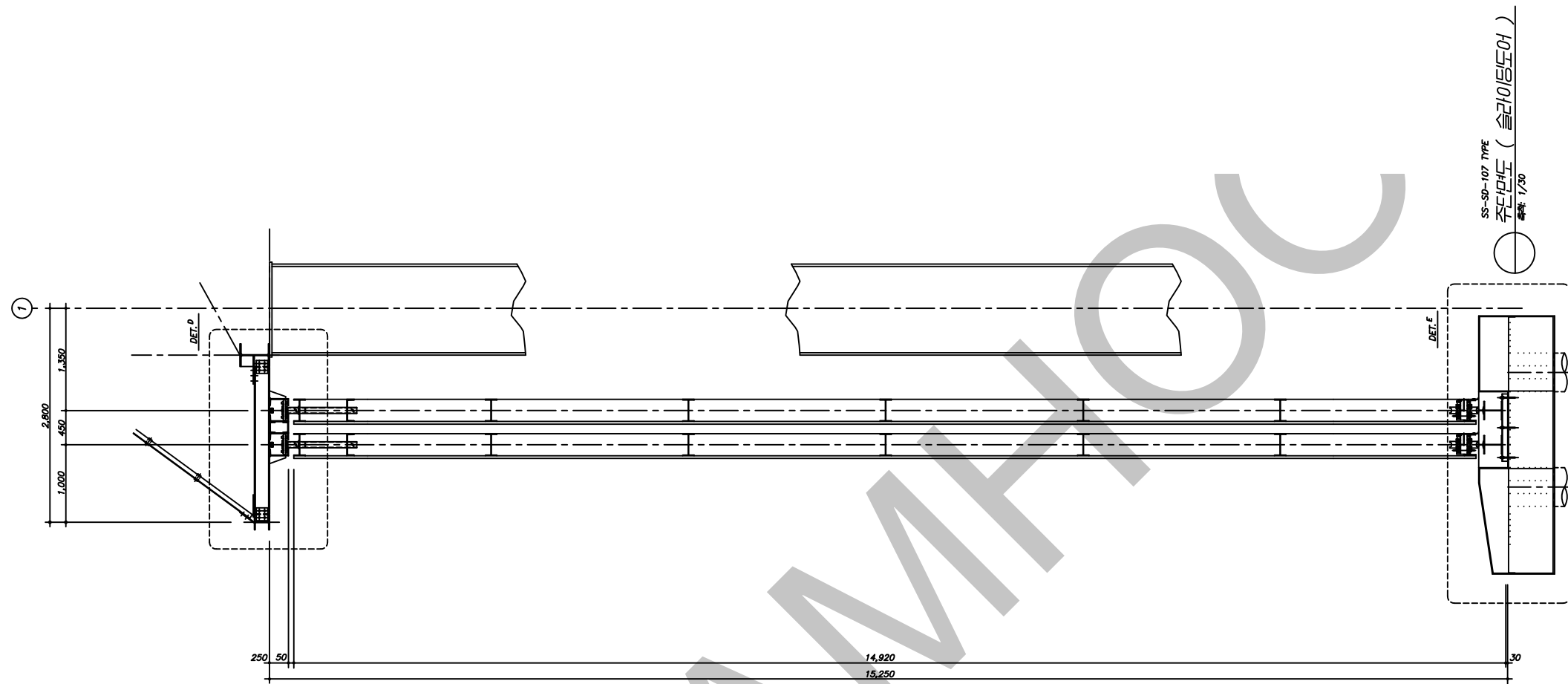
REVIEW LEVEL III

THIS DOCUMENT CONTAINS
SEISMIC CATEGORY (Q) ITEMS
 YES NO

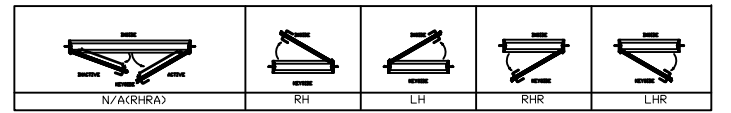
TAIPOWER DRAWING REFERENCE NUMBER

THIS DOCUMENT CONTAINS
SAFETY RELATED ITEMS
 YES NO

NOTES



OPENING TYPE



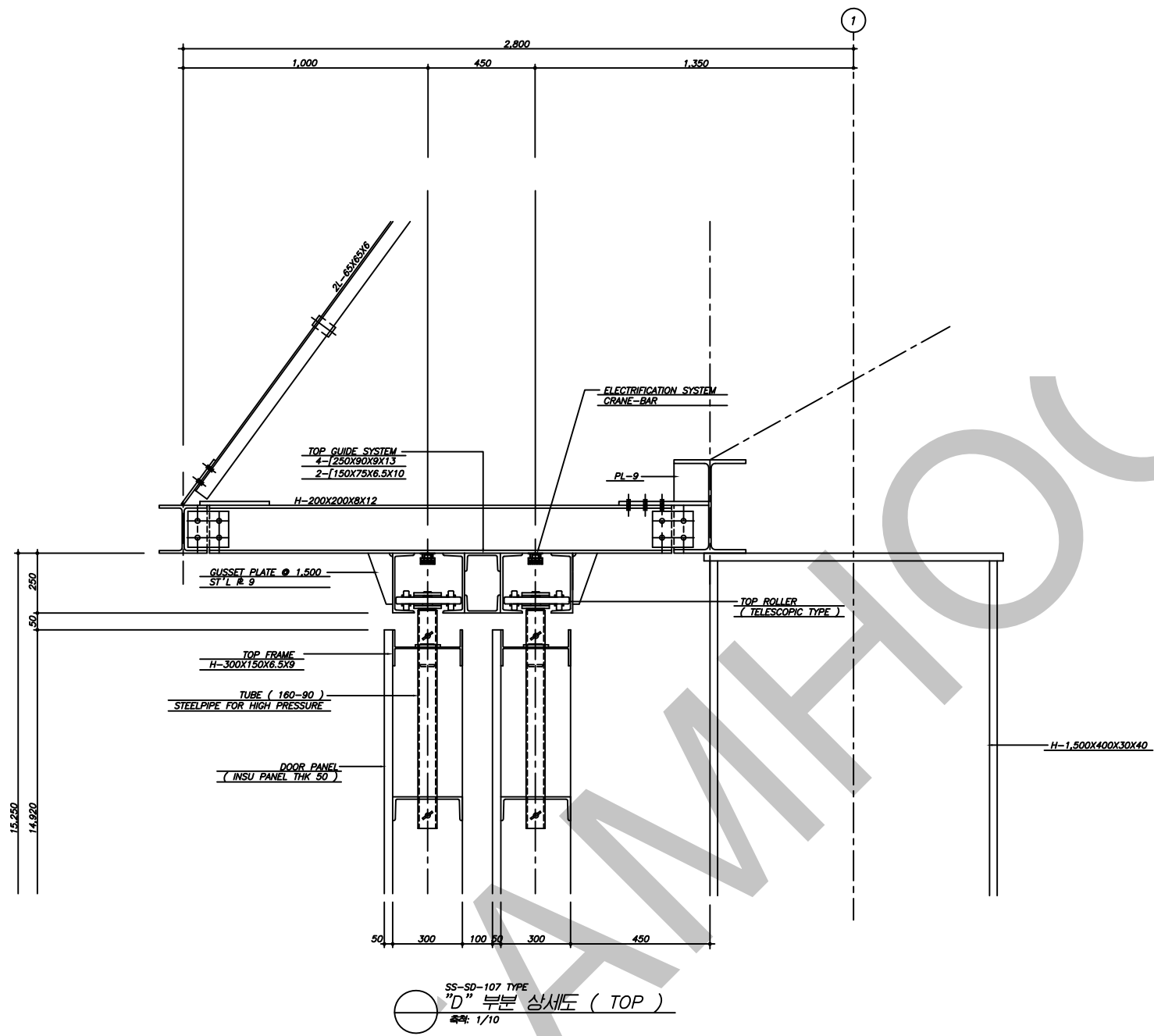
SAMHOON ENGINEERING CO.,LTD.



SAMHOON CO., LTD.
#256 Kyungin-Ro,
Bucheon City, Gyeonggi Province, Korea
TEL:(82)-32-661-3501/FAX:(82)-32-661-3505
http://www.samhoon.com E-Mail:samhoon@samhoon.com

REV	DATE	DESCRIPTION	BY	CHKD	APPRD	REFERENCE DRAWINGS	CAD FILE REF.	SHEET NO.	SCALE
							Z-PROJECT	SAMHOON- 003	1/30
△	15.JAN.24	ISSUED FOR DRAWING	S.H.KIM	J.S.KIM	J.S.MOO	CONTENT OF NOTES			

TITLE : Z - Project
VERTICAL SECTION



REVIEW LEVEL III

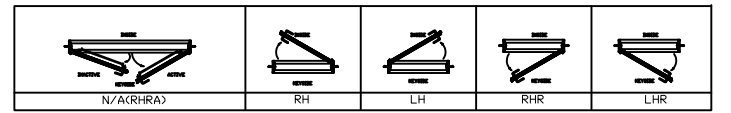
THIS DOCUMENT CONTAINS
SEISMIC CATEGORY (Q) ITEMS
 YES NO

TAIPOWER DRAWING REFERENCE NUMBER

THIS DOCUMENT CONTAINS
SAFETY RELATED ITEMS
 YES NO

NOTES

OPENING TYPE



SAMHOON ENGINEERING CO.,LTD.

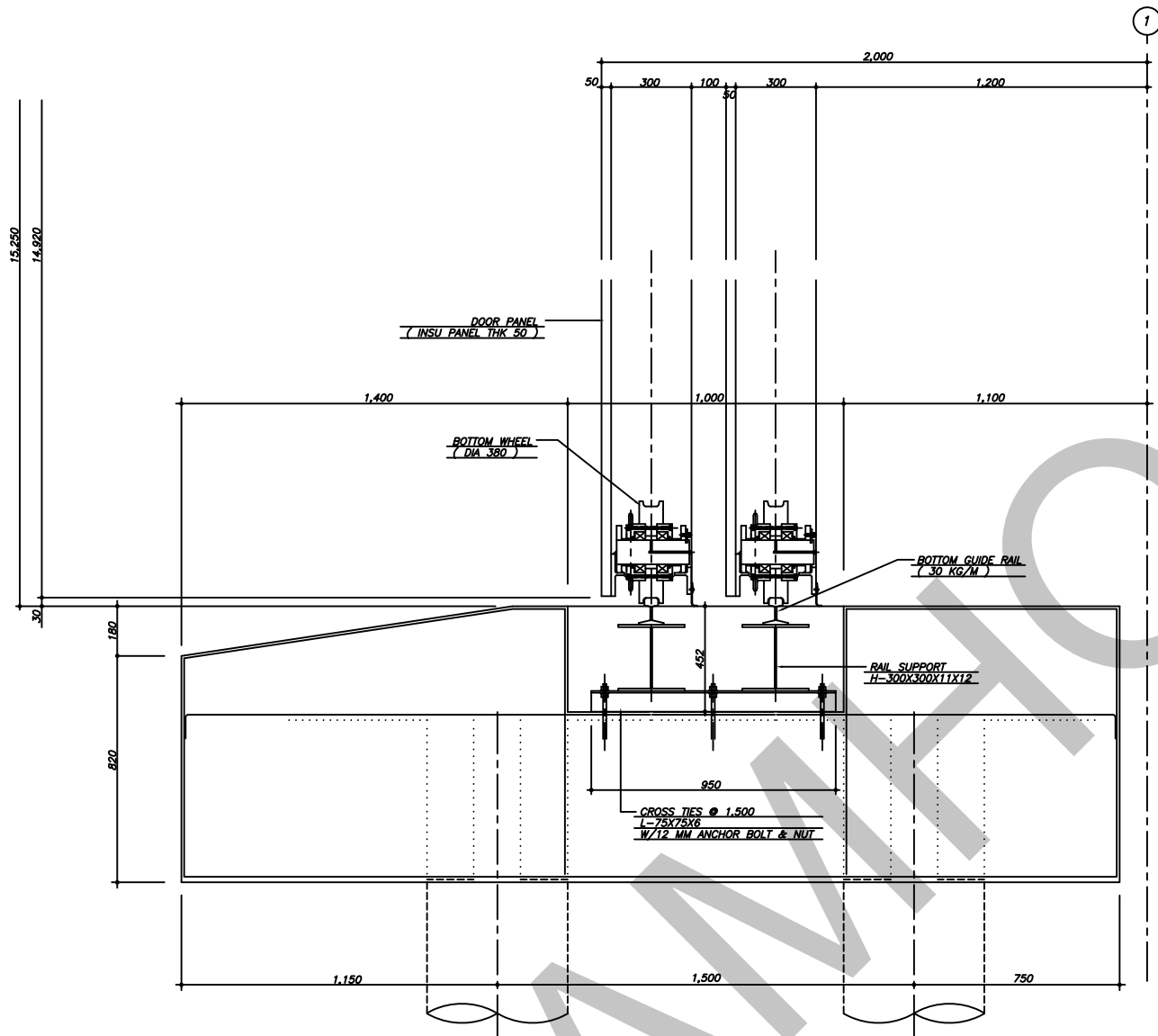


SAMHOON CO., LTD.
#256 Kyungin-Ro,
Bucheon City, Gyeonggi Province, Korea
TEL:(82)-32-661-3501/FAX:(82)-32-661-3505
http://www.samhoon.com E-Mail:samhoon@samhoon.com

REV	DATE	DESCRIPTION	BY	CHKD	APPRD	REFERENCE DRAWINGS	CAD FILE REF.	SHEET NO.	SCALE
							Z-PROJECT	SAMHOON- 004	1/10
△	15.JAN.24	ISSUED FOR DRAWING	S.H.KIM	J.S.KIM	J.S.MOO	CONTENT OF NOTES			

TITLE : Z - Project

PART "D" DETAIL(TOP)



SS-SD-107 TYPE
"E" 부분 상세도 (SILL)
축척: 1/10

REVIEW LEVEL III

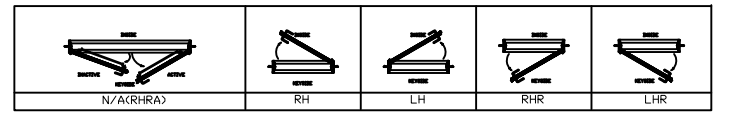
THIS DOCUMENT CONTAINS
SEISMIC CATEGORY (Q) ITEMS
 YES NO

TAIPOWER DRAWING REFERENCE NUMBER

THIS DOCUMENT CONTAINS
SAFETY RELATED ITEMS
 YES NO

NOTES

OPENING TYPE



SAMHOON ENGINEERING CO.,LTD.



SAMHOON CO., LTD.
#256 Kyungin-Ro,
Bucheon City, Gyeonggi Province, Korea
TEL:(82)-32-661-3501/FAX:(82)-32-661-3505
http://www.samhoon.com E-Mail:samhoon@samhoon.com

REV	DATE	DESCRIPTION	BY	CHKD	APPRD	REFERENCE DRAWINGS	CAD FILE REF.	SHEET NO.	SCALE
							Z-PROJECT	SAMHOON- 005	1/10
△	15.JAN.24	ISSUED FOR DRAWING	S.H.KIM	J.S.KIM	J.S.MOO	CONTENT OF NOTES			

TITLE : Z - Project

PART "E" DETAIL(SILL)

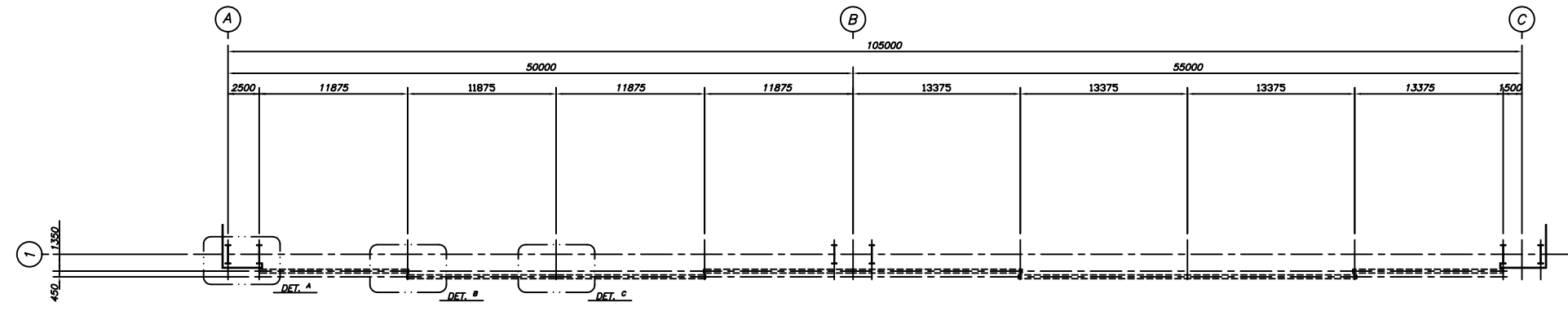
REVIEW LEVEL III

THIS DOCUMENT CONTAINS
SEISMIC CATEGORY (Q) ITEMS
 YES NO

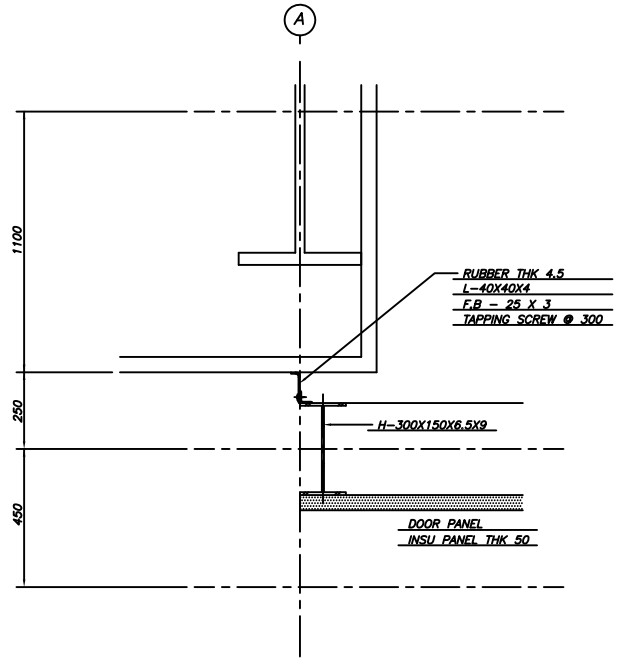
TAIPOWER DRAWING REFERENCE NUMBER

THIS DOCUMENT CONTAINS
SAFETY RELATED ITEMS
 YES NO

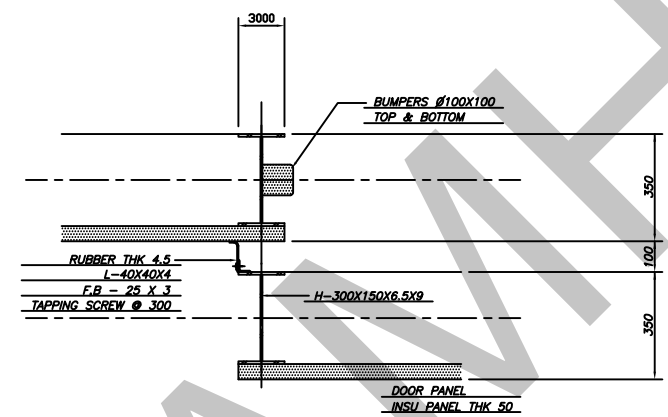
NOTES



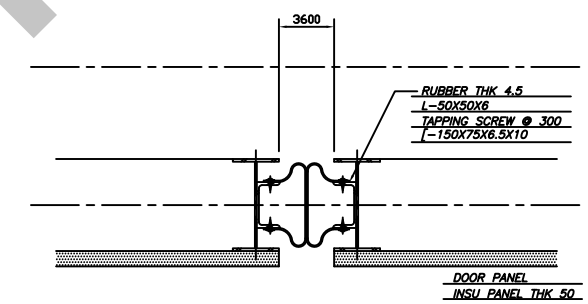
○ " 1 " 일 부분 평면도
축척 : 1/200



○ " A " 부분 상세도 (JAMB 1)
축척 : 1/10

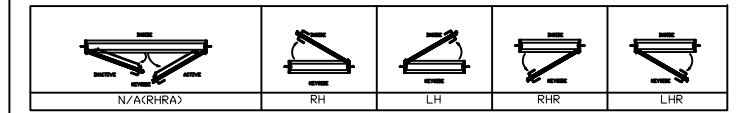


○ " B " 부분 상세도 (JAMB 2)
축척 : 1/10



○ " C " 부분 상세도 (JAMB 3)
축척 : 1/10

OPENING TYPE



SAMHOON ENGINEERING CO.,LTD.



SAMHOON CO., LTD.
#256 Kyungin-Ro,
Bucheon City, Gyeonggi Province, Korea
TEL:(82)-32-661-3501/FAX:(82)-32-661-3505
http://www.samhoon.com E-Mail:samhoon@samhoon.com

REV	DATE	DESCRIPTION	BY	CHKD	APPRD	REFERENCE DRAWINGS	CAD FILE REF.	SHEET NO.	SCALE
△	15.JAN.24	ISSUED FOR DRAWING	S.H.KIM	J.S.KIM	J.S.MOO	CONTENT OF NOTES	Z-PROJECT	SAMHOON- 006	1/10, 1/200

TITLE : Z - Project
Plan of Front Doors & Details